

# What has been happening at Elm Surfacing Ltd...

## Hand Lay



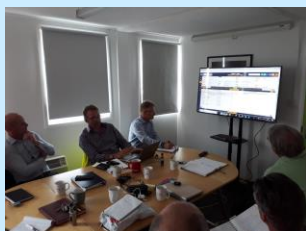
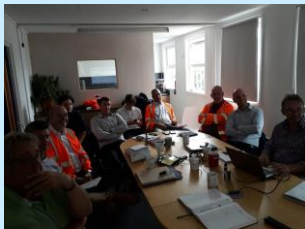
North Colonnade – Canary Wharf

Well done to Ron and his gang for an outstanding piece of work done around Canary Wharf over the weekend.

It proves that good forward planning always aids in achieving exceptional results.

# New System...

All of the hand lay team successfully attended their first training session of the new works management system.



# What has been happening at Elm Surfacing Ltd...

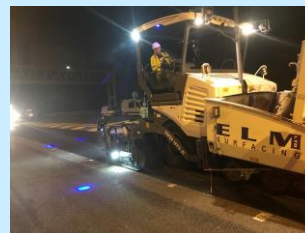
## Machine Lay

Elm Surfacing Ltd and Tarmac offering bespoke, customer focused solutions on an ever challenging network.



## M25 - Tarmac

Elm Surfacing Collaborating with Tarmac on the M25. Great job guys you all know who you are...



Welcome to our Summer Newsletter 2018. Please take a look through at all the new and exciting things that have been happening...





### Machine Lay:

Please welcome...

- Billy O'Neill – Operations Manager
- Saxon and his Gang
- More guys in Aldous Gang

### Hand Lay:

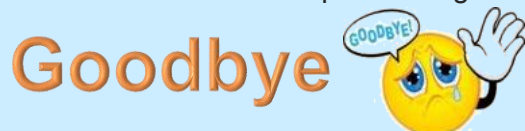
Please welcome...

- Connor Haggerty in Runcieman's gang
- Joseph Bratton – HL Transport
- Keith Peel – HL Operative

### Office:

Please welcome...

- Mick Pritchett – Transport Manager



We are sad to say goodbye to Andy Jordan our Operations Manager, we wish you luck in the future!

Time to say goodbye to Lynn Hollis as she is now off to enjoy her retirement.



# Congratulations

Congratulations to Chelsea Hollis on completing her College course and then being promoted to Human Resources Administrator.

*Keeping the Human in Human Resources*



Well done to both Charlie Lewin and Callum Parsons on passing their driving test.



# Charity & Events

Elm Surfacing had an amazing day at People's day with Lewisham on Saturday 7<sup>th</sup> July @ Mansfield's Park.



**DO NOT FORGET WE ARE RAISING MONEY FOR BREAST CANCER AWARENESS ON 19<sup>TH</sup> OCTOBER 2018.**

**#GETYOURPINKON!!**

contact us



Jeff Hollis – Managing Director

[Jeff@elmsurfacing.com](mailto:Jeff@elmsurfacing.com)

Billy O'Neill – Surfacing Operations Manager

[Billy.O'neill@elmsurfacing.com](mailto:Billy.O'neill@elmsurfacing.com)

Jake Leyser – Commercial Head of Surfacing

[Jake.Leyser@elmsurfacing.com](mailto:Jake.Leyser@elmsurfacing.com)

Neil Thompson – Civil & Reinstatement General Manager

[Neil.thompson@elmsurfacing.com](mailto:Neil.thompson@elmsurfacing.com)

Stephen Dray – Financial Controller

[Stephen.dray@elmsurfacing.com](mailto:Stephen.dray@elmsurfacing.com)

Michael Lee – Reinstatement Contracts Manager

[Michael.lee@elmsurfacing.com](mailto:Michael.lee@elmsurfacing.com)

Hamid Safavi – Compliance Manager

[Hamid.safavi@elmsurfacing.com](mailto:Hamid.safavi@elmsurfacing.com)

Mick Pritchett – Transport Manager

[Mick.pritchett@elmsurfacing.com](mailto:Mick.pritchett@elmsurfacing.com)

Depot Address:

Elm Surfacing Ltd  
Adelaide Dock  
Symmonds Drive  
Sittingbourne  
Kent, ME10 3SY

[www.elmsurfacing.com](http://www.elmsurfacing.com) – New and approved website



LinkedIn

[@elmsurfacingLtd](https://twitter.com/elmsurfacingLtd) [@ElmsurfacingLTD](https://www.facebook.com/ElmsurfacingLTD)

Any other enquires please do not hesitate to contact...

[Enquiries@elmsurfacing.com](mailto:Enquiries@elmsurfacing.com)